

Old Blewett Field Trip
September 27, 2015
Nick Zentner, CWU Geology



- 11:30 am
- 1. Lauderdale Junction

- 12:15 pm
- 2. Liberty Town Hall

- 1:30 pm
- 3. Basalt Dike

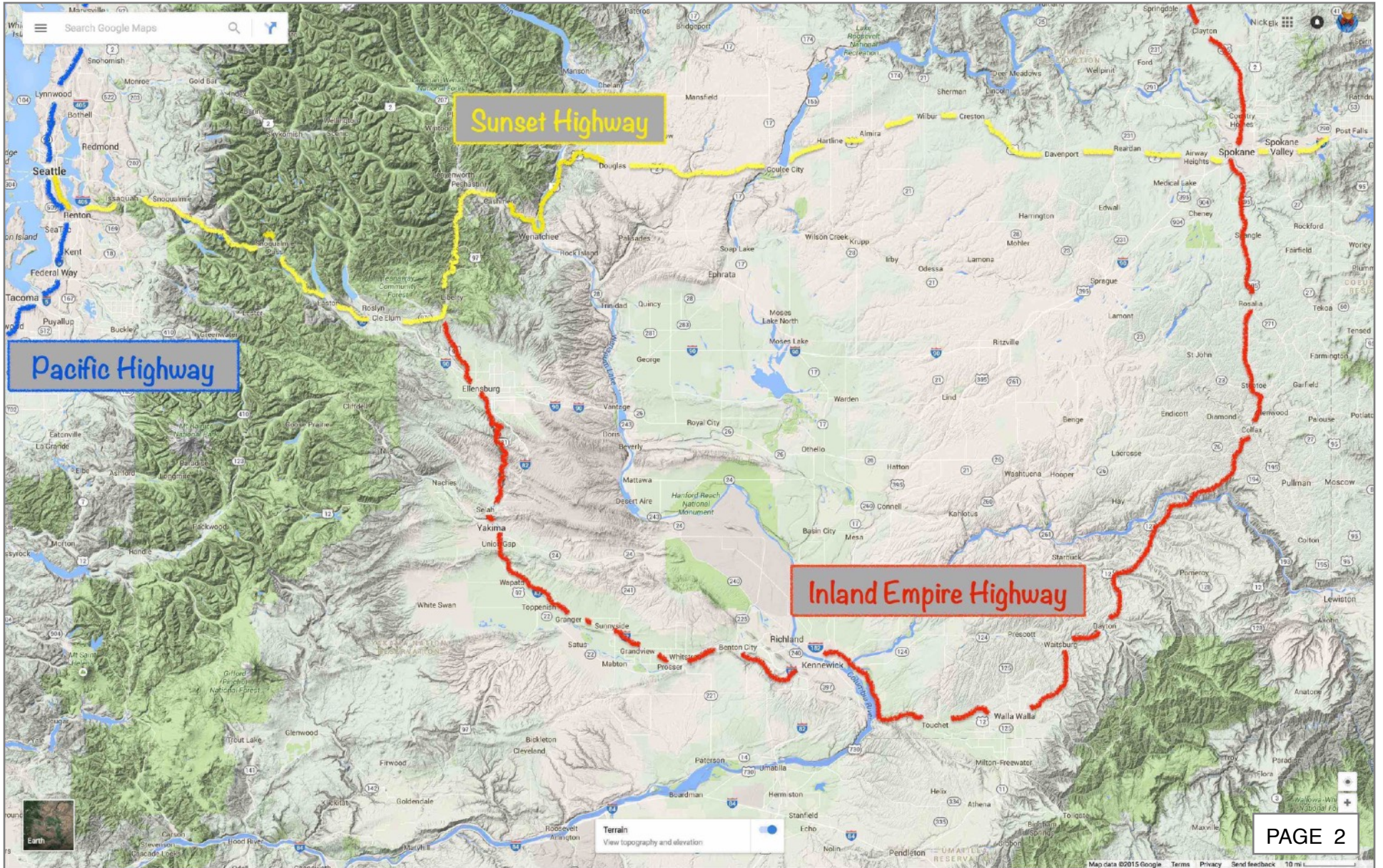
- 2:15 pm
- 4. Echo Point

- 3:00 pm
- 5. Plant Fossils

- 4:00 pm
- 6. Conglomerate

Old Blewett Pass

Blewett Pass





Engstrom

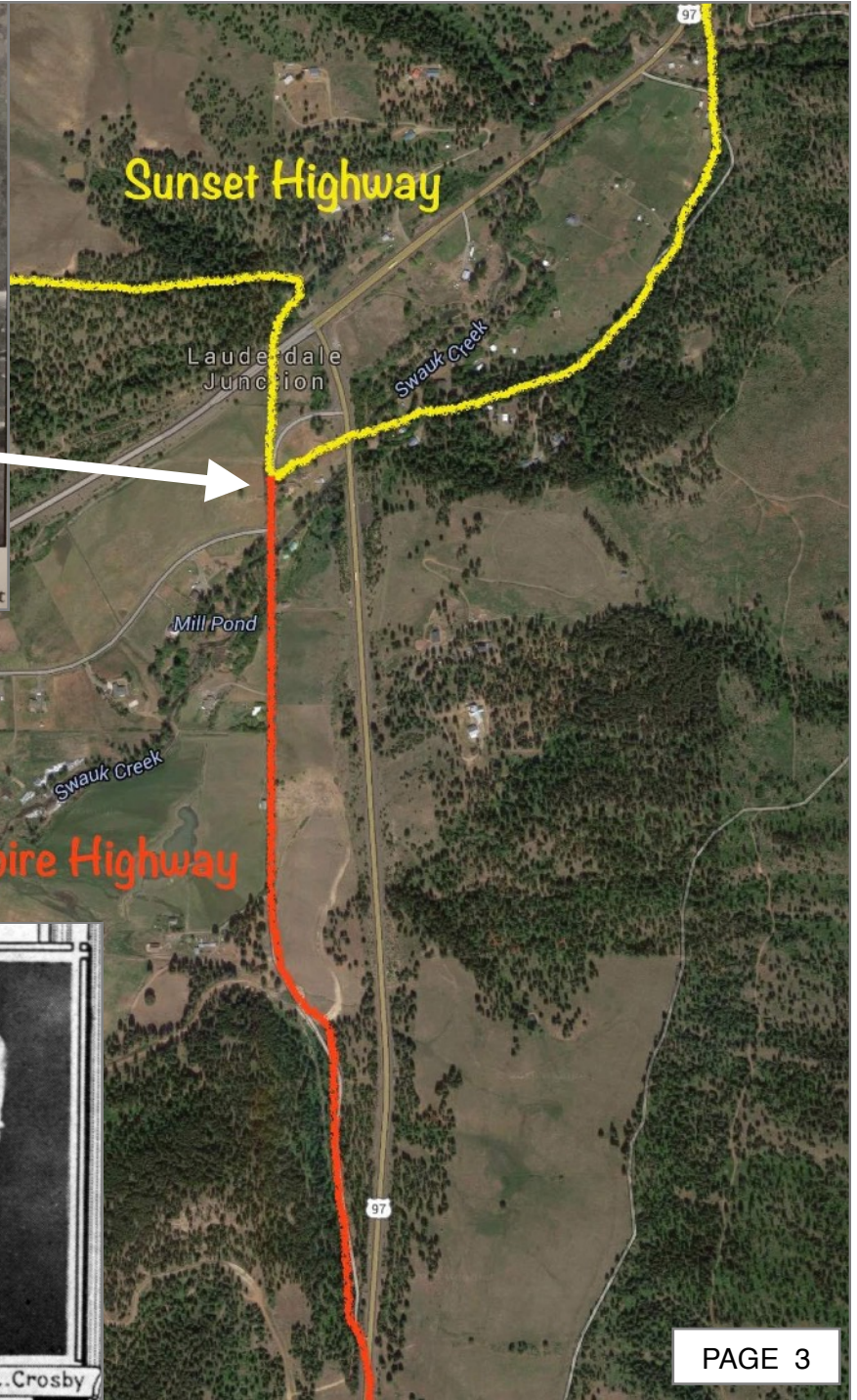
The Lauderdale Lodge—1921. Peter McCallum closed his post office and store on the Swauk in 1897 after the post office and stores had been established in Liberty starting in 1899.



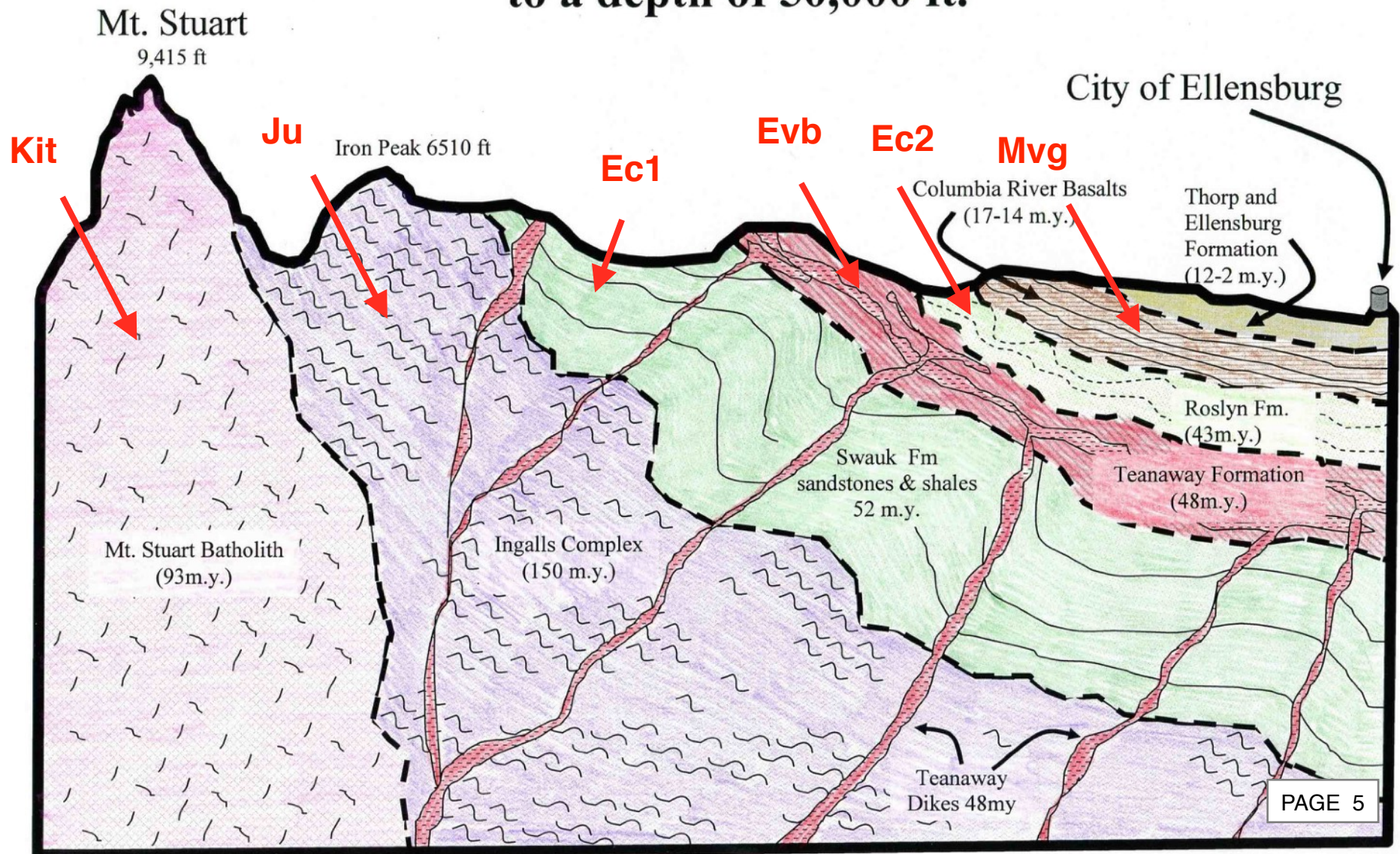
Inland Empire Highway



Harry L. Crosby



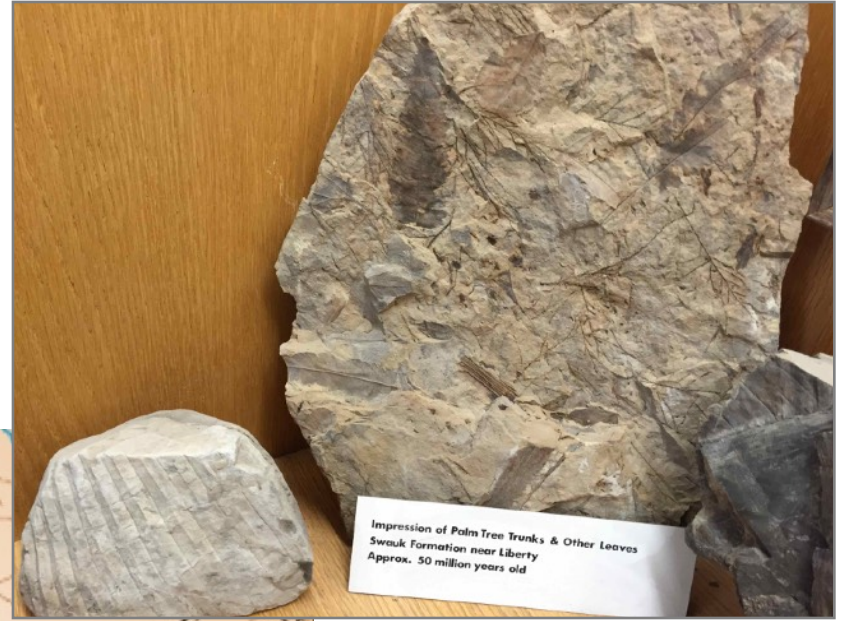
Geologic Cross Section from Mt. Stuart to Ellensburg to a depth of 50,000 ft.



Powell



Dilhoff



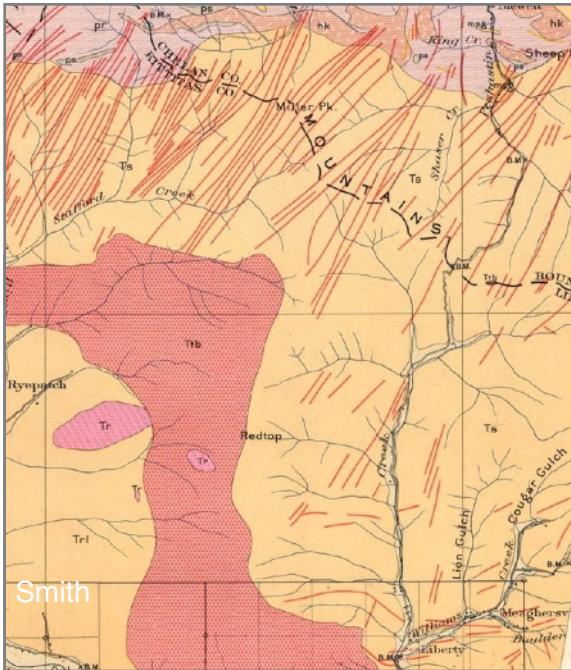
Impression of Palm Tree Trunks & Other Leaves
Swauk Formation near Liberty
Approx. 50 million years old



Figge



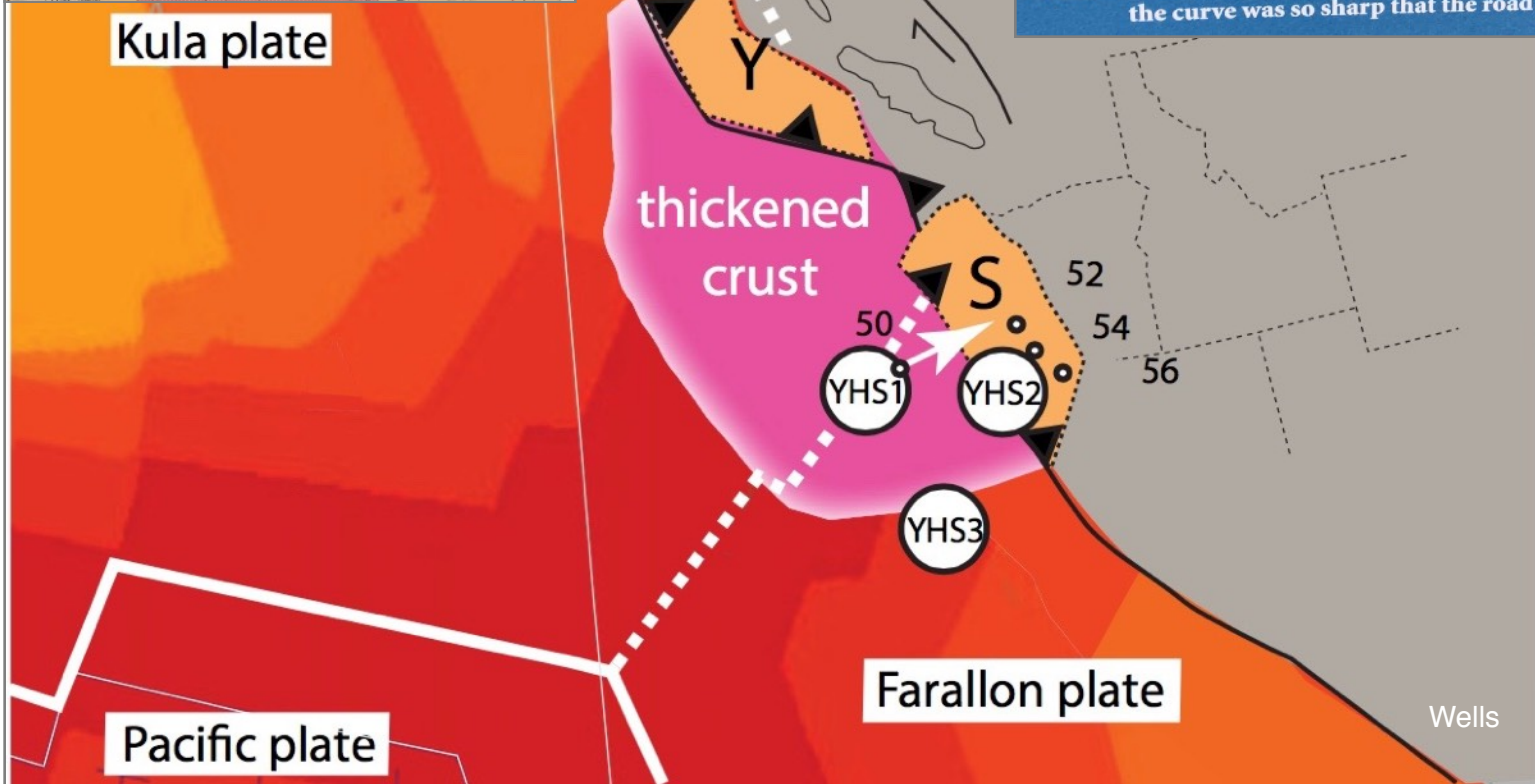
Eocene Palm Frond
Swauk Area - 18 miles north of Ellensburg



Kula-Resurrection



The infamous Echo Point in 1922. Also called Hairpin Curve or Biscuit Point, the curve was so sharp that the road doubled back on itself. DOT



Kula plate

Pacific plate

Farallon plate

Wells

'Hard Rock' Gold



Repin

'Placer' Gold



Repin

'Hard Rock' Blues



'Placer' Blues

