

Peoh Point & Snoqualmie Pass Field Trip
 Sunday, June 14, 2015
 Nick Zentner, CWU Geology

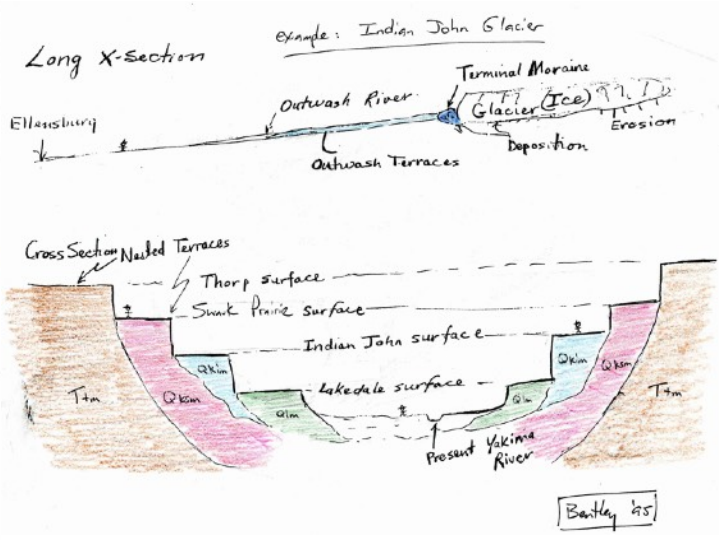
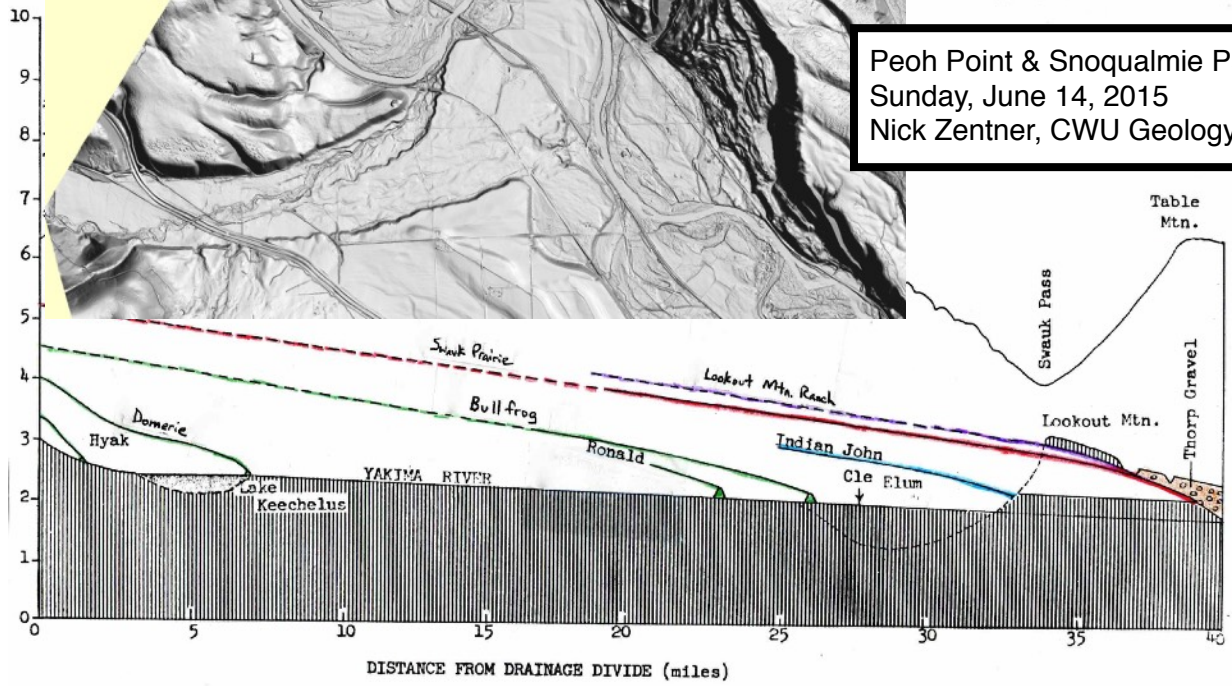
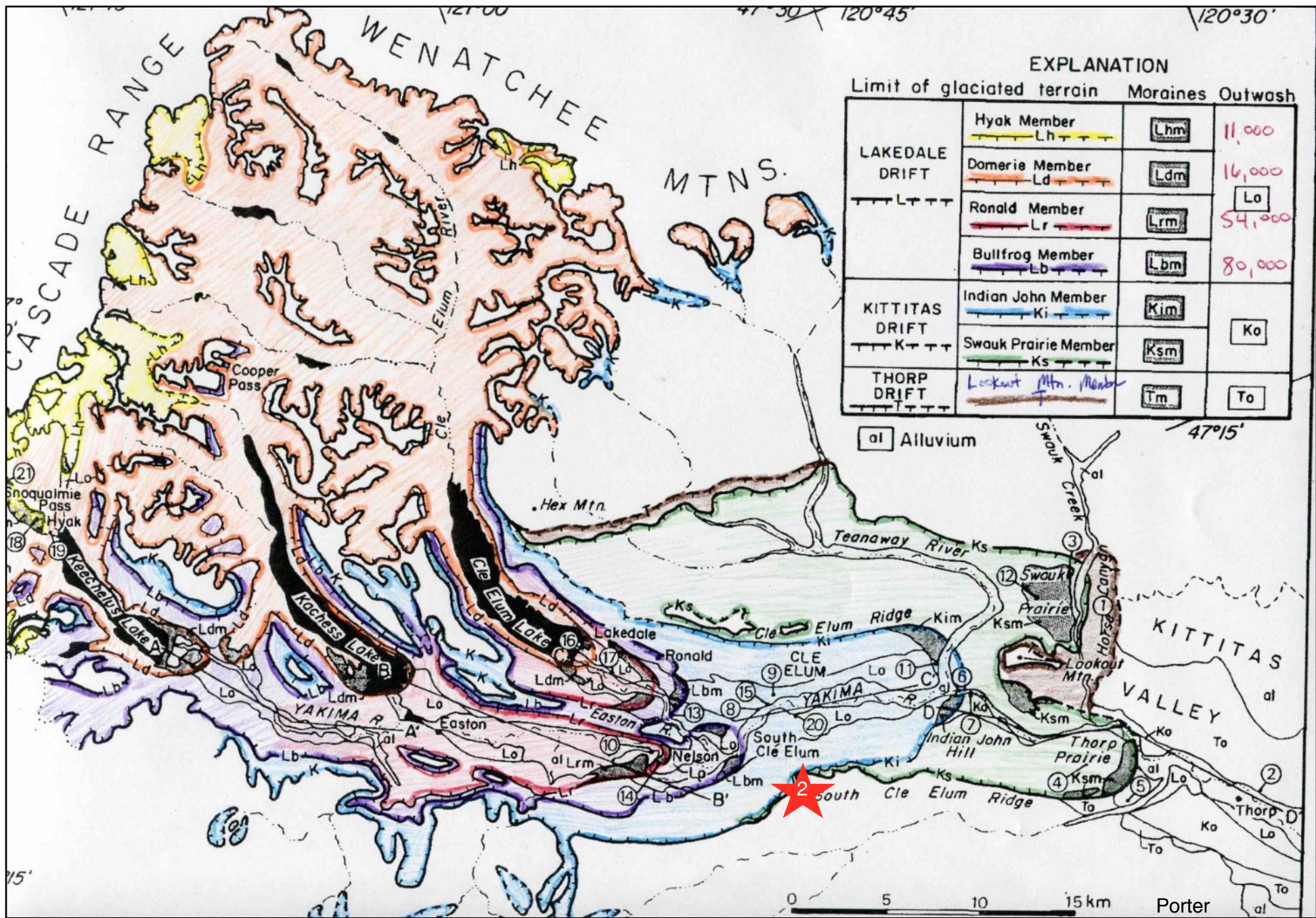
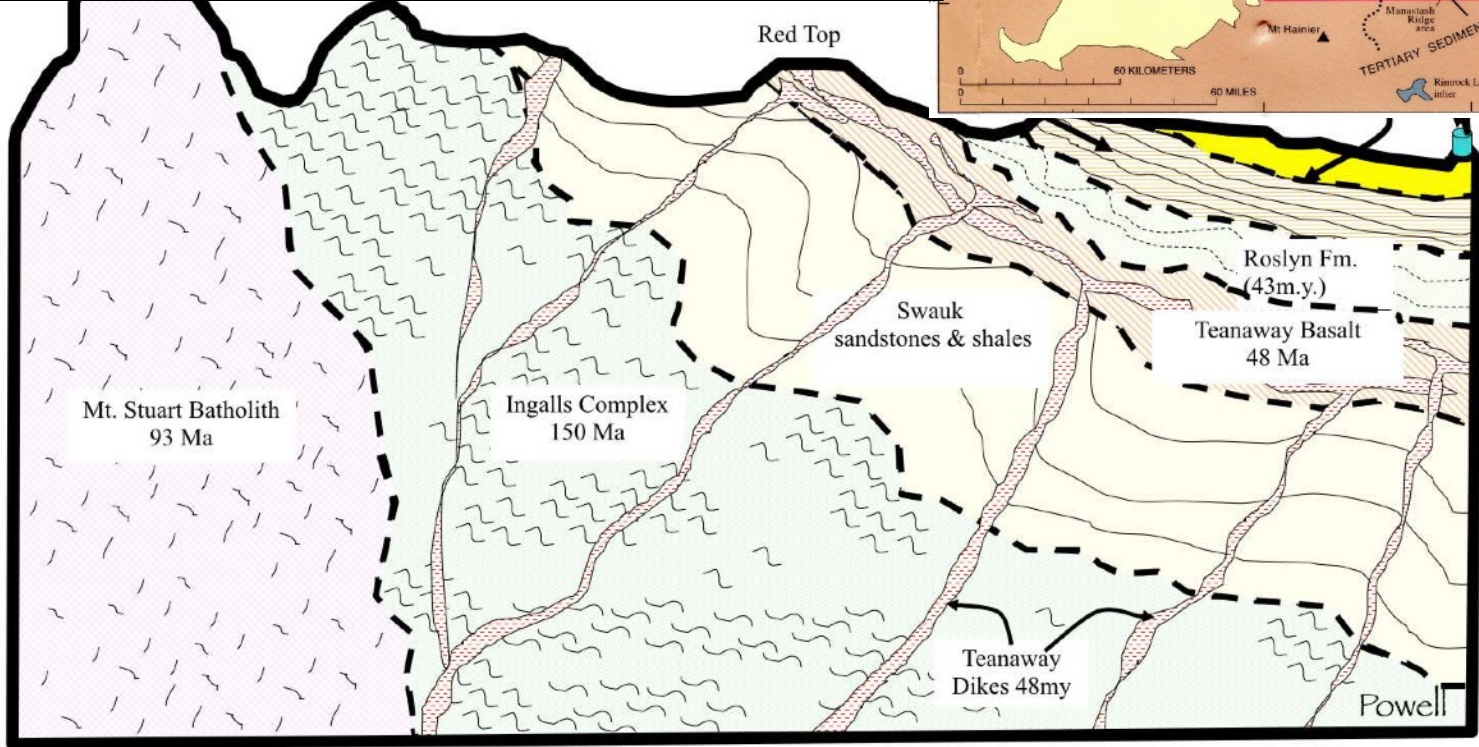
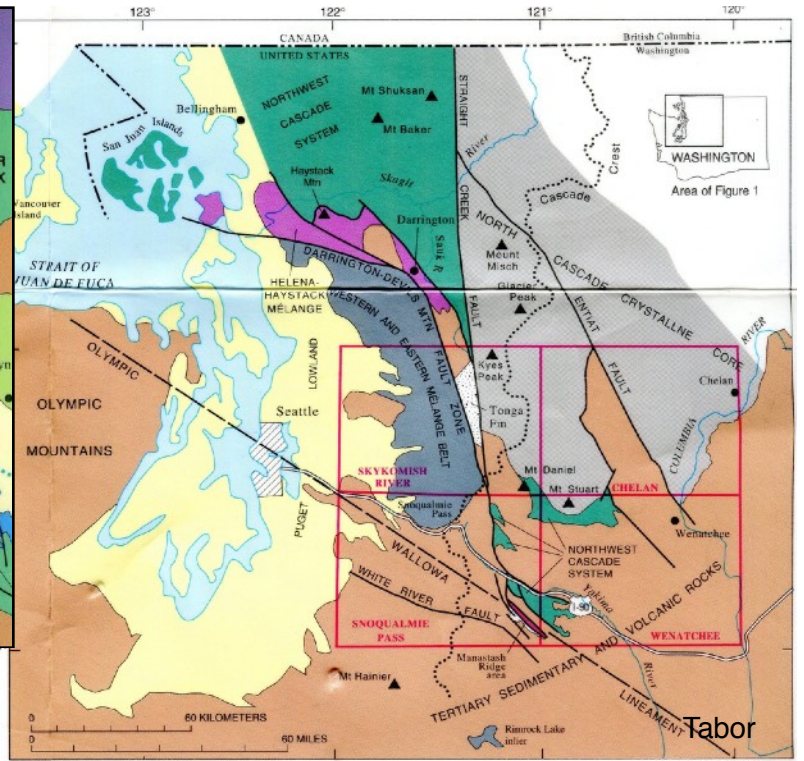
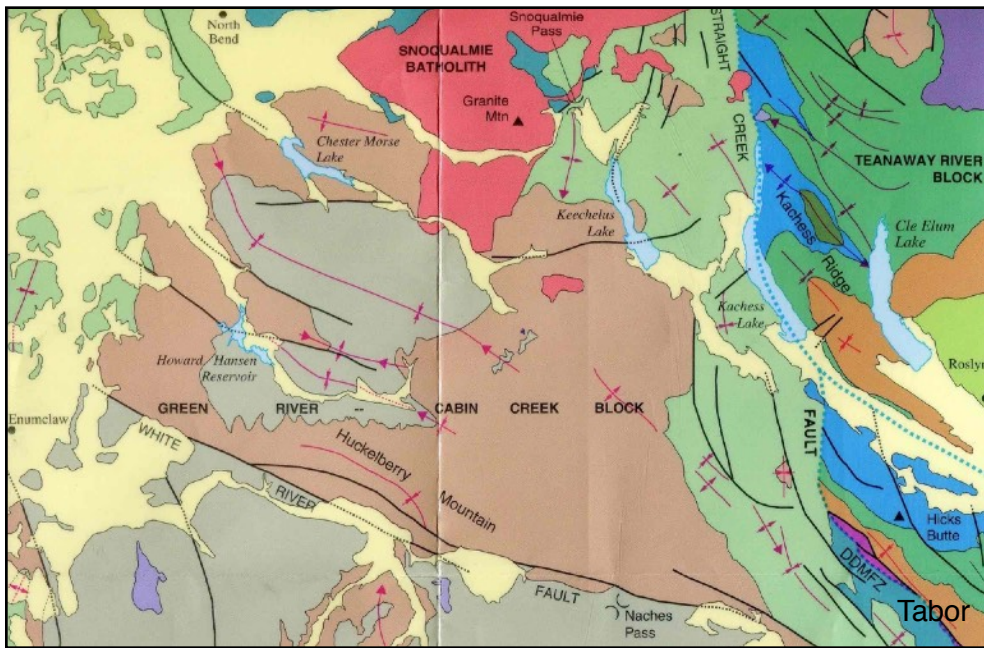
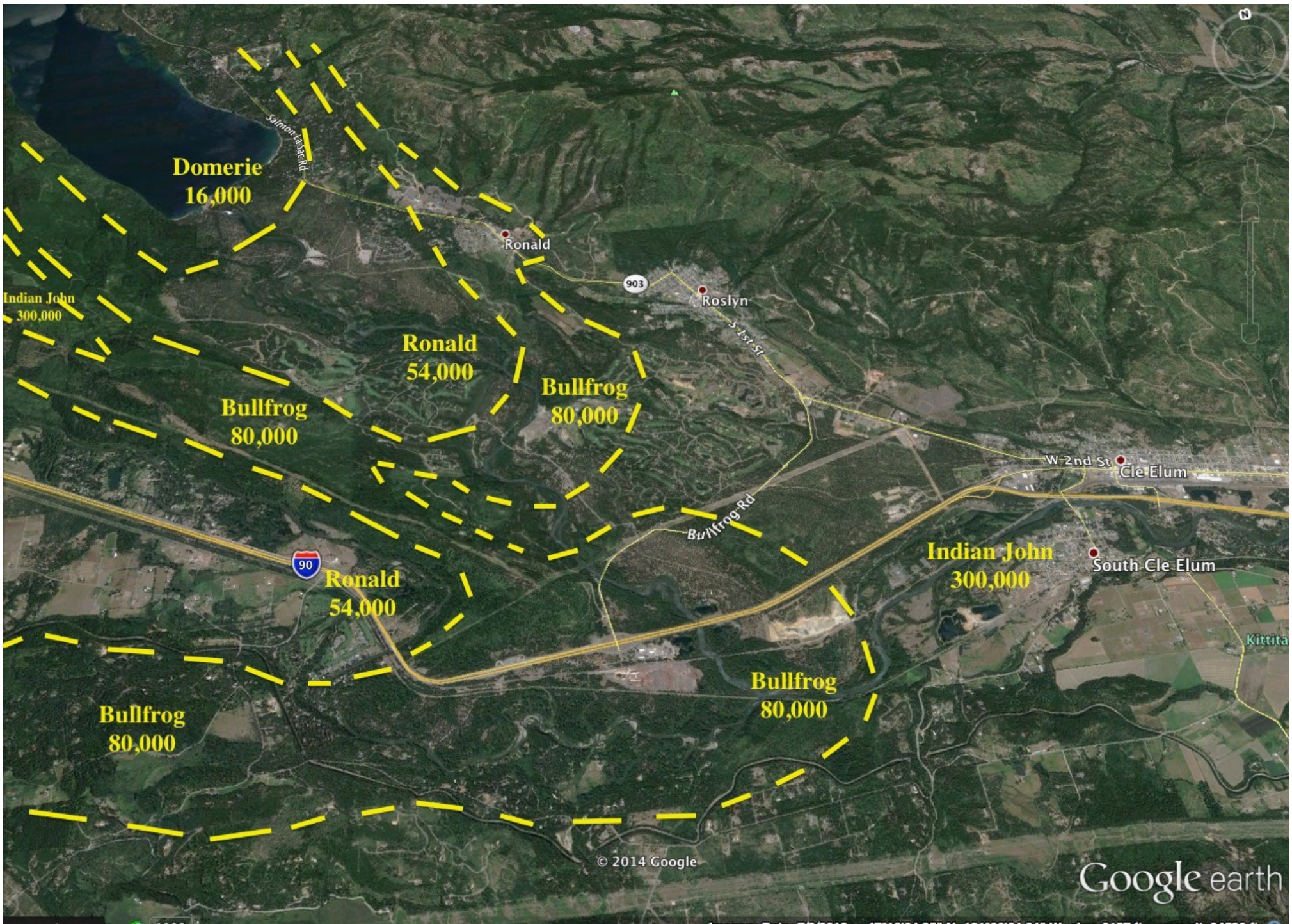


Figure 19. Section along upper Yakima River drainage showing position of principal moraines and inferred glacier profiles.

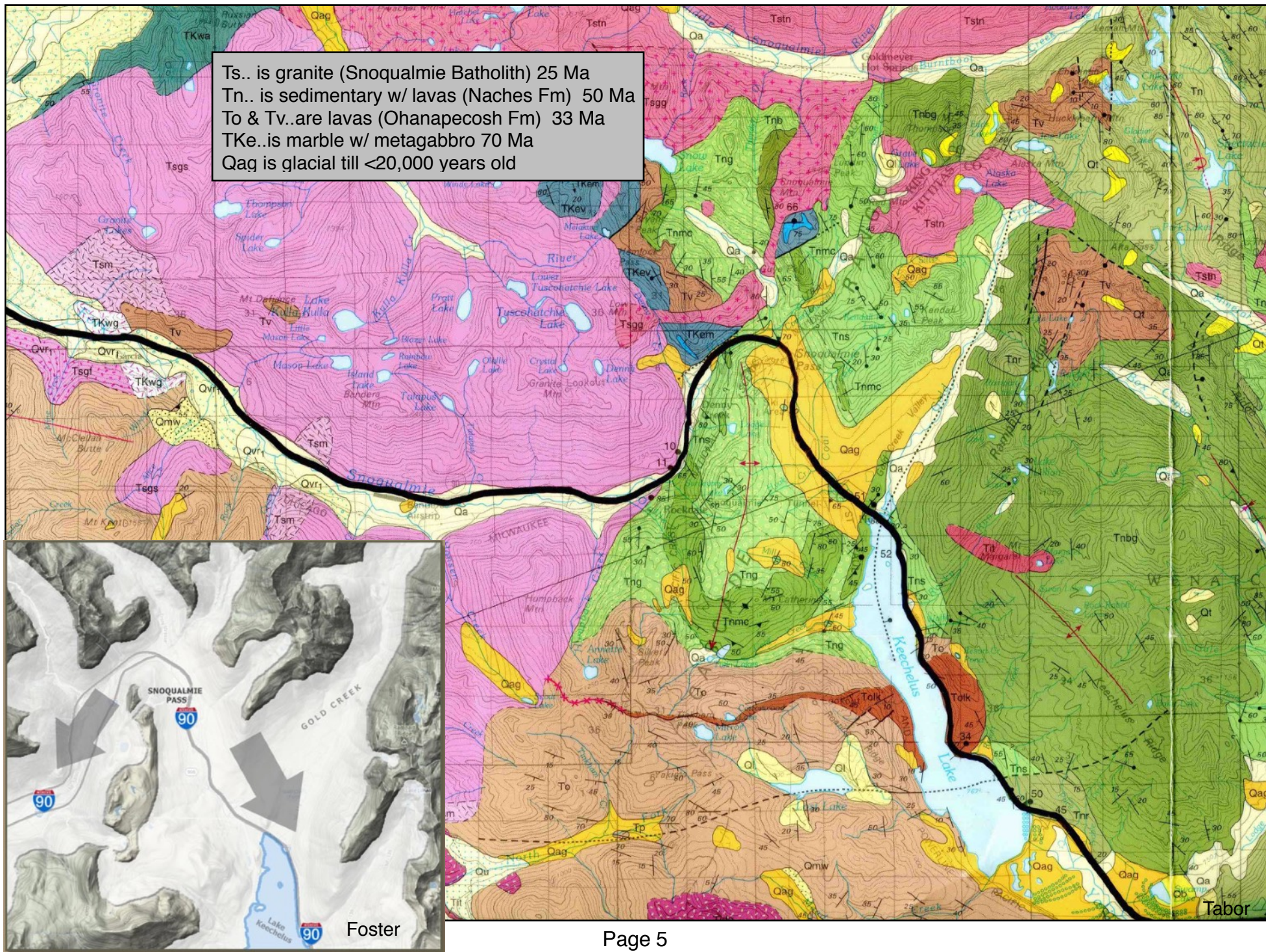
(Porter, 1969)

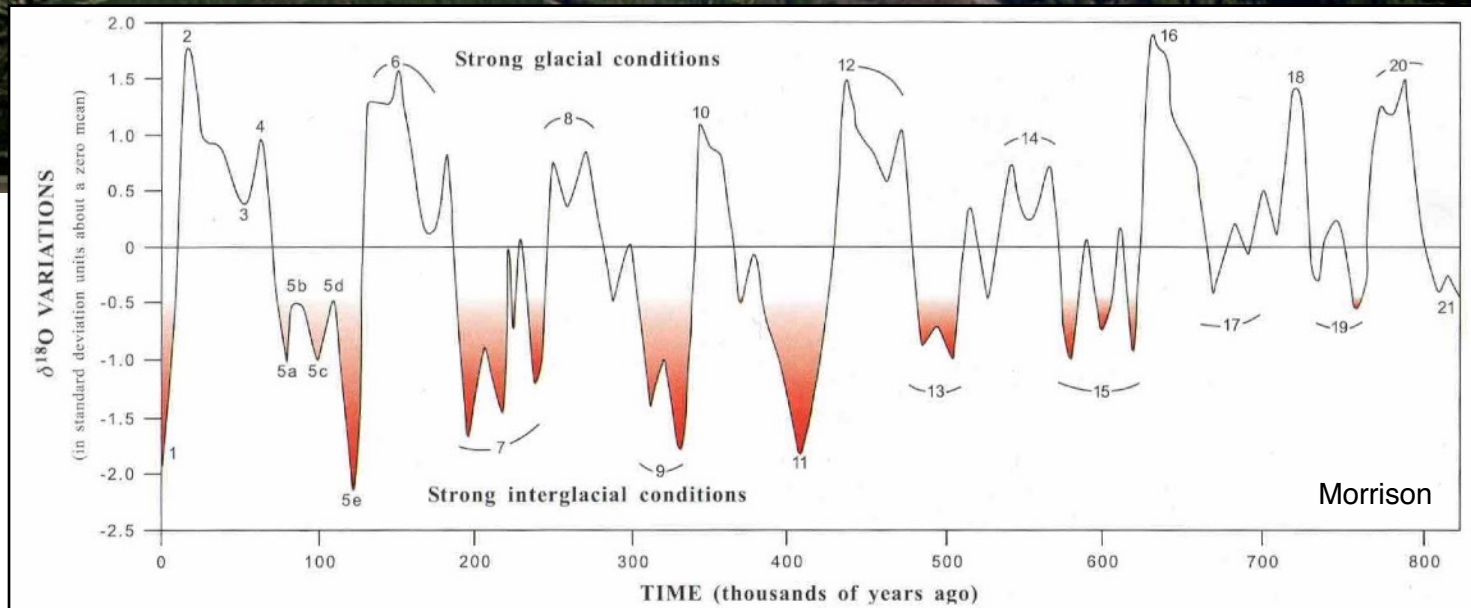
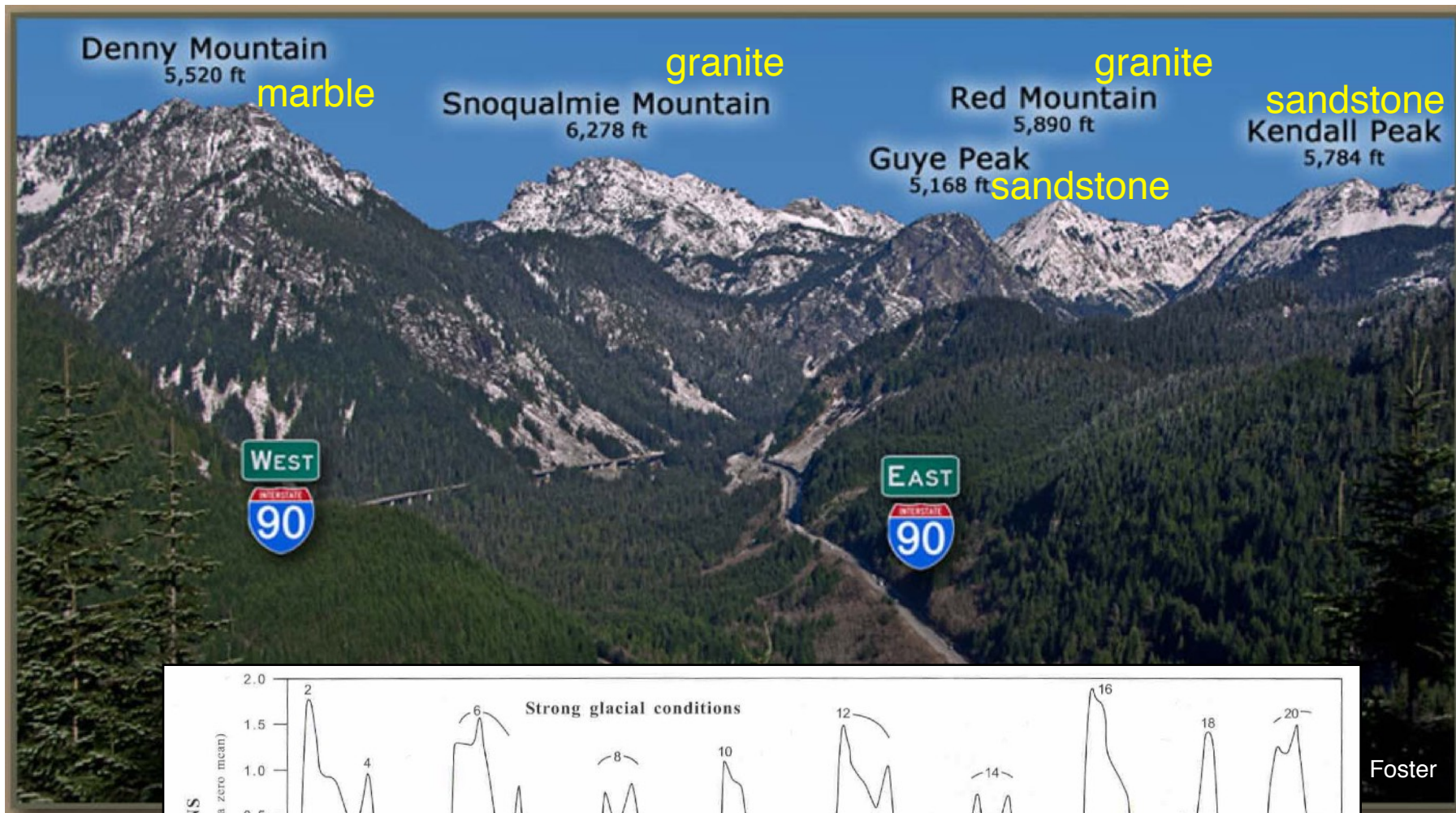






Ts.. is granite (Snoqualmie Batholith) 25 Ma
Tn.. is sedimentary w/ lavas (Naches Fm) 50 Ma
To & Tv..are lavas (Ohanapecosh Fm) 33 Ma
TKe..is marble w/ metagabbro 70 Ma
Qag is glacial till <20,000 years old





Foster

